

Basilisk from an industrial perspective

Extreme wave loads on offshore structures

Øystein Lande
18 June 2019

Basilisk from an industrial perspective

- Øystein Lande
- Department: Marine Structures
 - Safety & integrity of structures at sea
- Section: Environmental Loading & Response
- Extreme wave loads on offshore structures



http://kobiecarouthers.weebly.com/uploads/1/8/2/3/18237875/9209698_orig.jpg



Maersk oil&gas, 2016

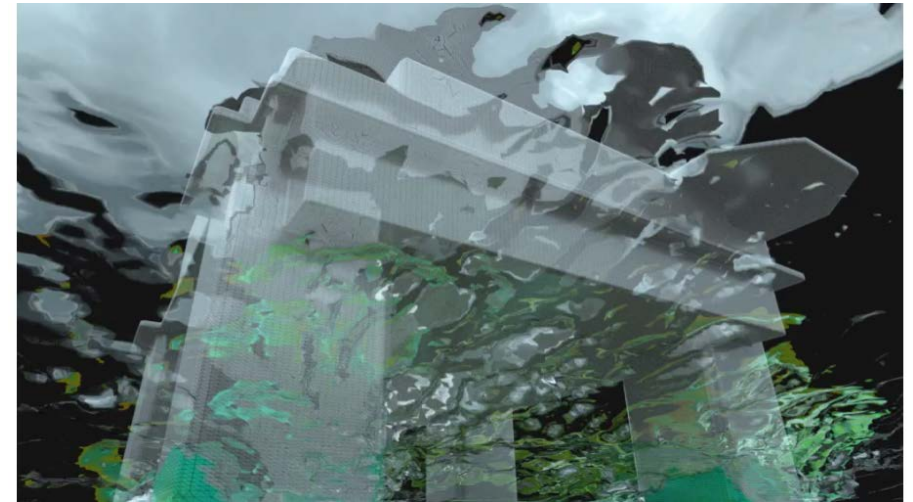


BBC News 2015 (<https://youtu.be/D2dv57CpT-s>)



Extreme wave loads on offshore structures: Two main challenges

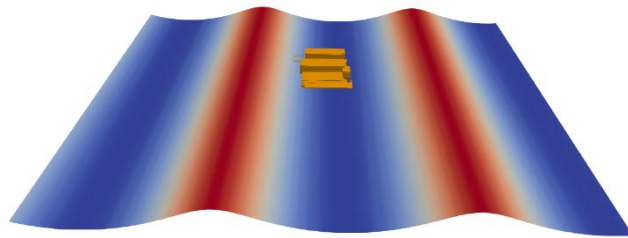
- 1. The modelling of breaking waves
 - Model testing
 - CFD
- 2. The statistical problem
 - Which wave shall we model? (how high, steep, shape, etc)
 - What is the probability of a wave breaking exactly where my structure is standing?
 - Target: wave load with annual probability 10^{-4}
- Our goal with Basilisk: Run 100's of wave simulations



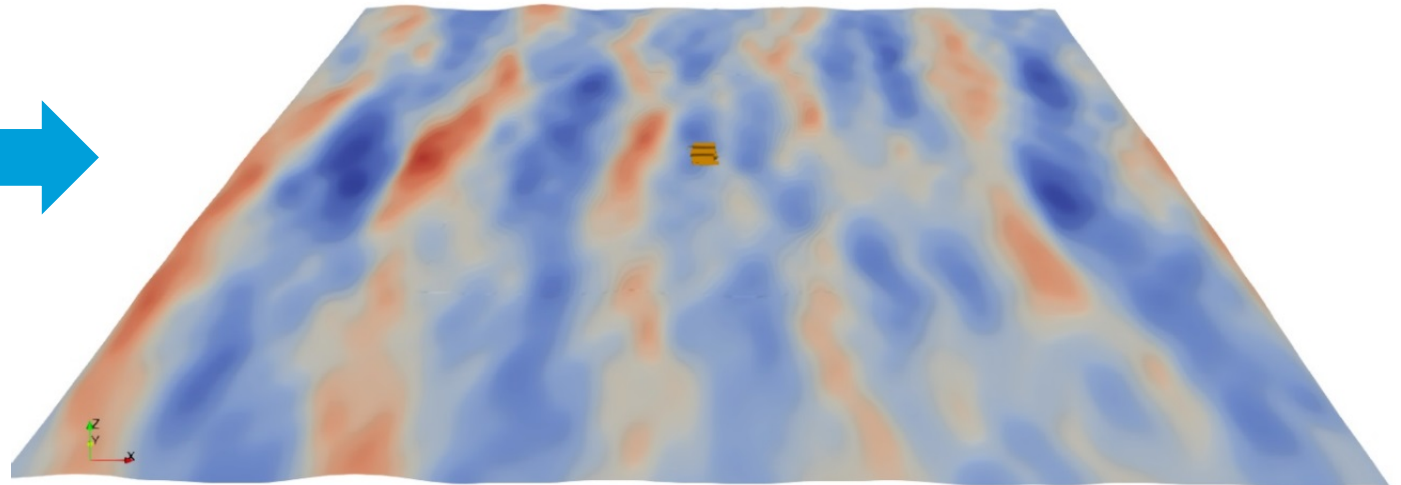
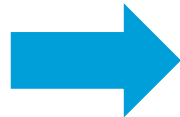
Modelling of realistic ocean waves in a numerical environment – Indeed a challenge

- Important factors which influences crest heights, wave shape and breaking limits
 - Short-crestedness
 - Irregularity
 - Wave evolution (breaking)

Typical simulation requirements:
1.5 x 1.5 km domain, 60-80 sec



The past

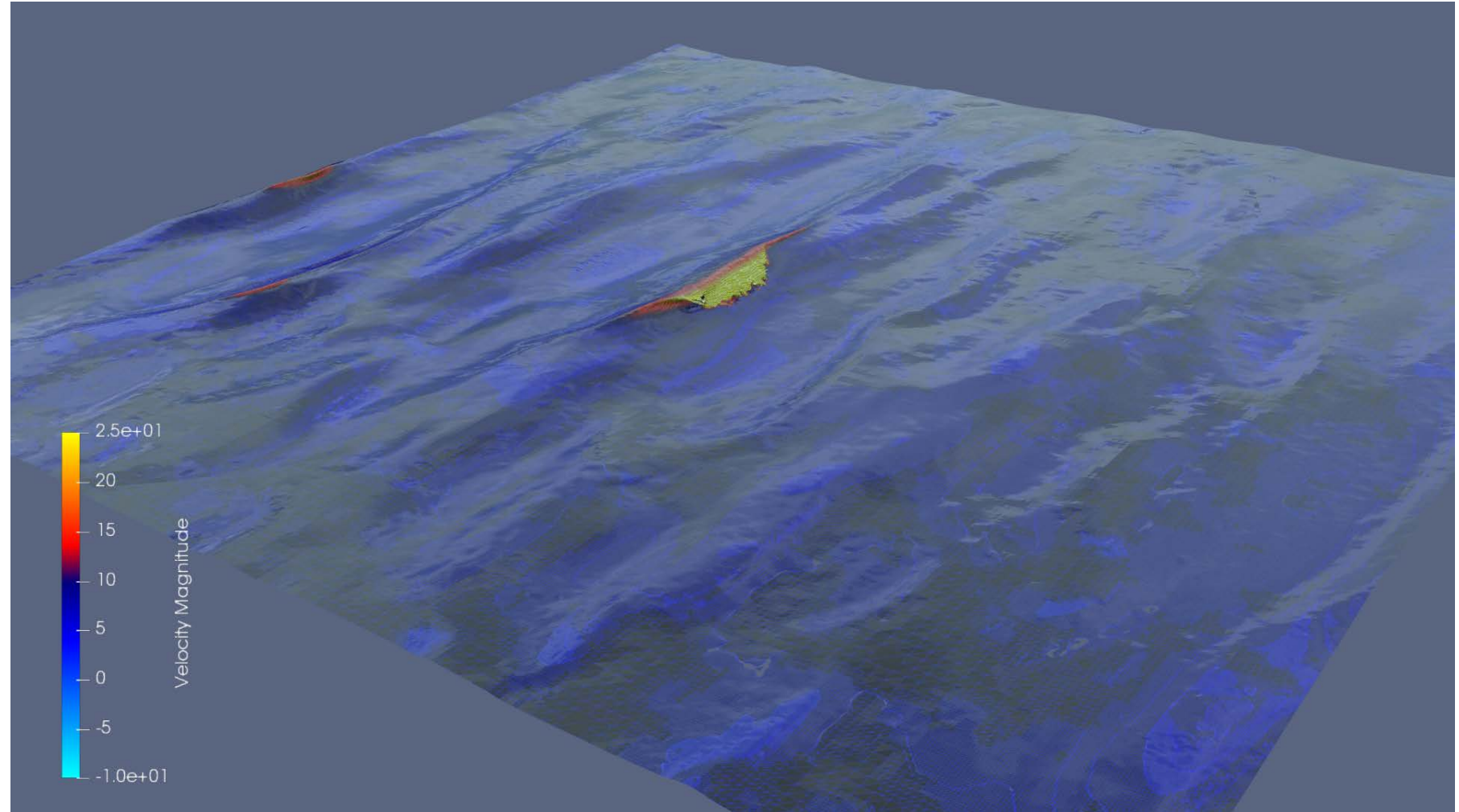


The present

Why Basilisk for ocean waves?

<https://youtu.be/1KRlpboGX-A>

- The vital components for successfully and effectively modelling ocean waves
 - A good numerical implementation
 - **AMR**
 - **Octree mesh**
 - Accurate numeric implementation
 - Geometric VOF (PLIC or more advanced)
 - Momentum advection (in case of two-phase flow)
 - “reduced gravity approach”
- Tailor-made for wave propagation?

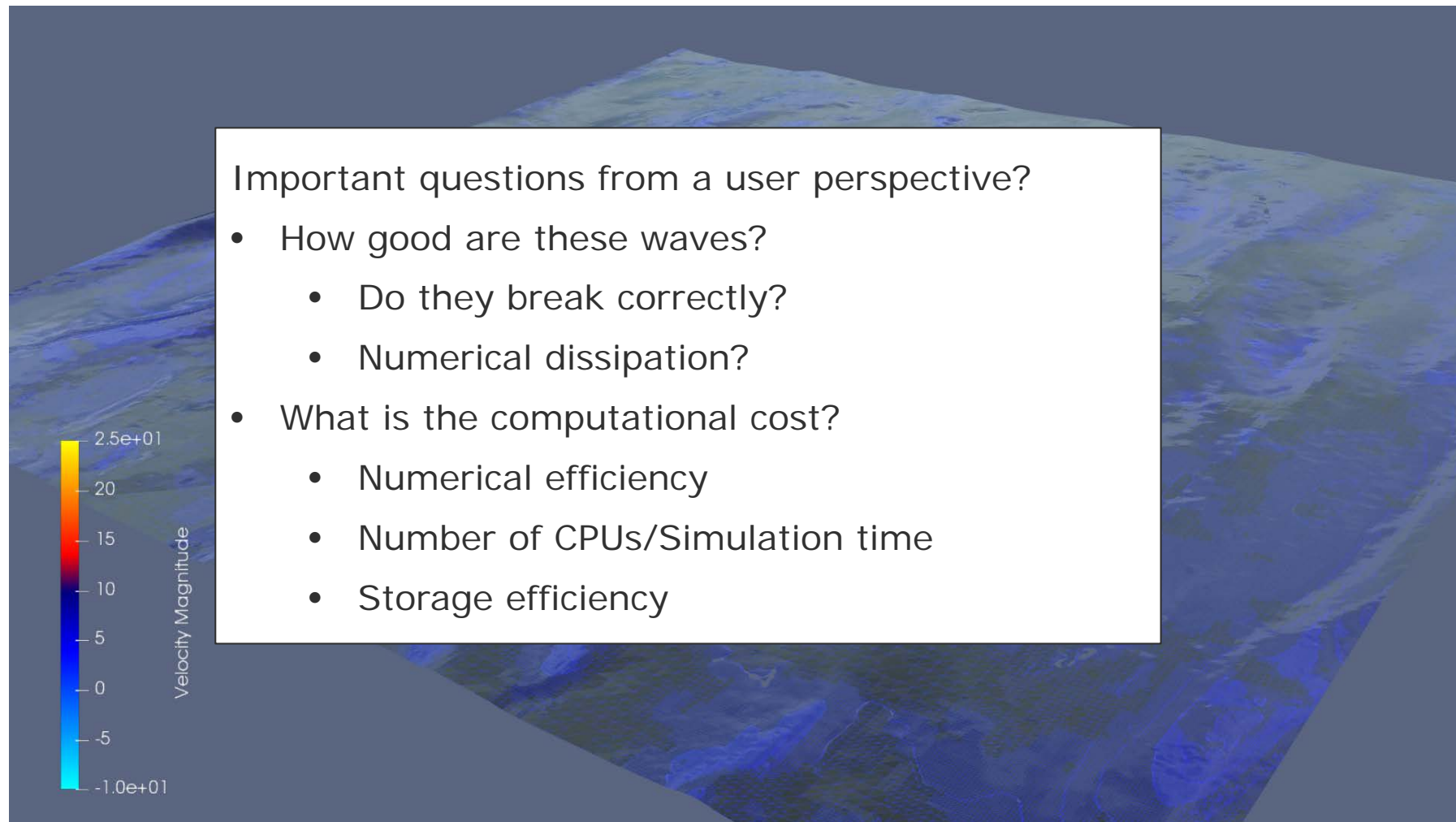


Basilisk OpenMP, rendered in Paraview & Blender

Why Basilisk for ocean waves?

<https://youtu.be/1KRlpboGX-A>

- The vital components for successfully and effectively modelling ocean waves
 - A good numerical implementation
 - **AMR**
 - **Octree mesh**
 - Accurate numeric implementation
 - Geometric VOF (PLIC or more advanced)
 - Momentum advection (in case of two-phase flow)
 - “reduced gravity approach”
- Tailor-made for wave propagation?



Basilisk OpenMP, rendered in Paraview & Blender

Validation of CFD results

- model test of a wide range of irregular focused wave groups, with variation of
 - Wave spectrum
 - directional spreading
 - steepness
- Linear wave input known
 - Used as input to CFD, corrected to second order
 - **No tuning!**
- Measurements:
 - Wave elevation (various locations in the basin)
 - Particle velocity (LDA)



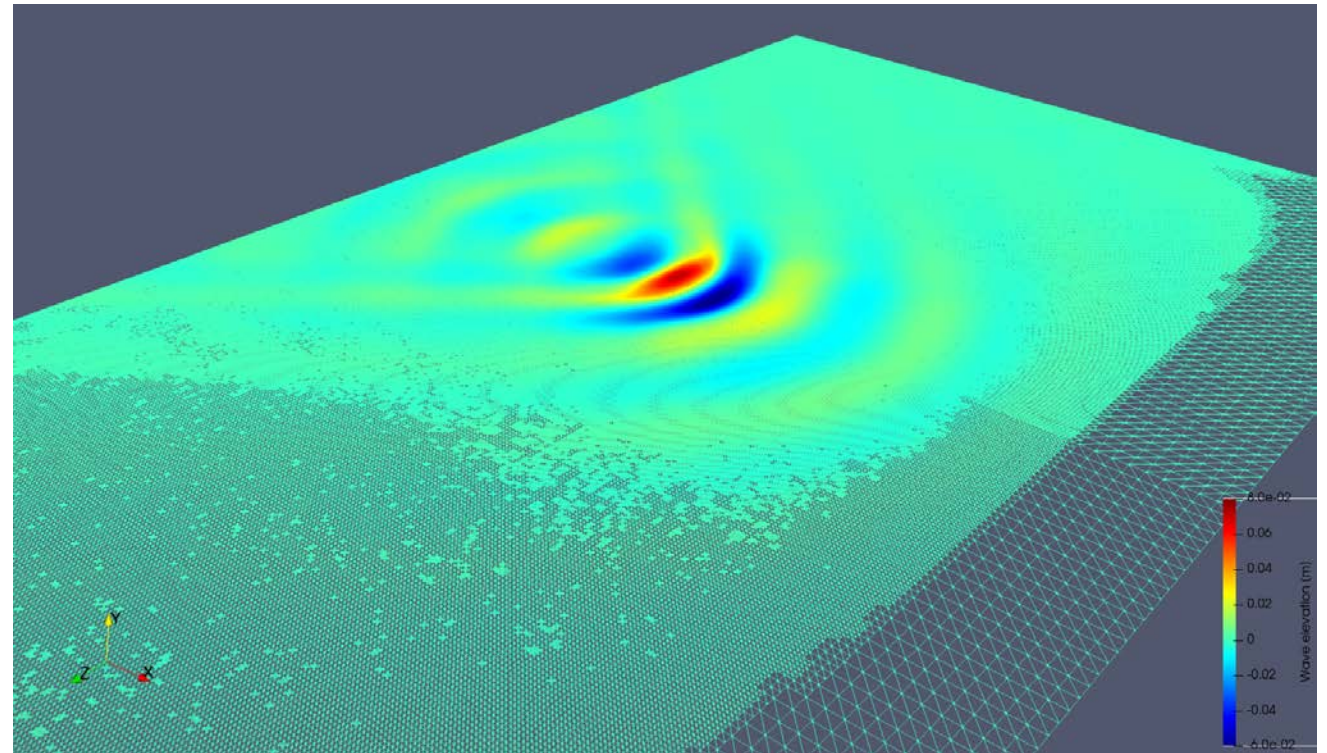
Table 3 Events simulated in CFD

Spectrum	Spreading factor s	Linear amplitude
B	uni-directional	20, 40 and 52 mm
B	s=4	20, 40, 55, 70 and 78 mm
D	uni-directional	20, 40, 55, 61 mm
D	s=4	20, 55, 70, 85 and 93 mm

OMAE 2018-78288 – *Propagation of steep and breaking short-crested waves – A comparison of CFD codes*

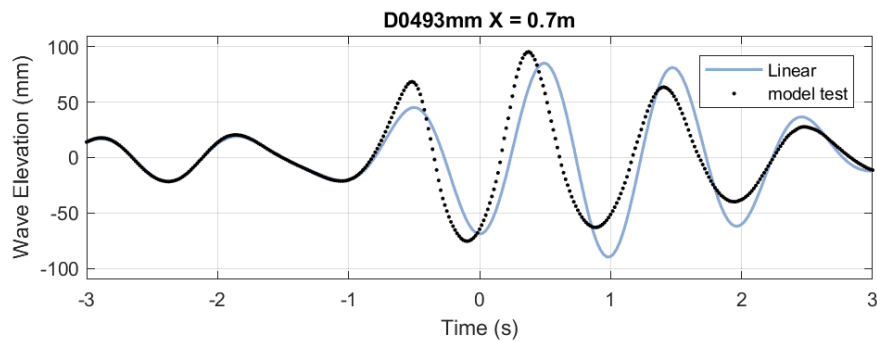
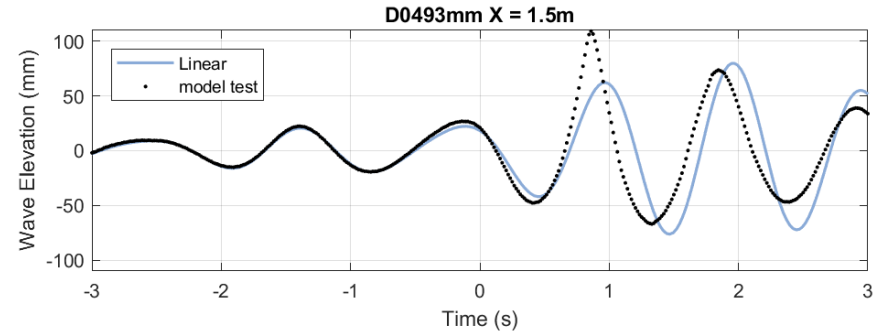
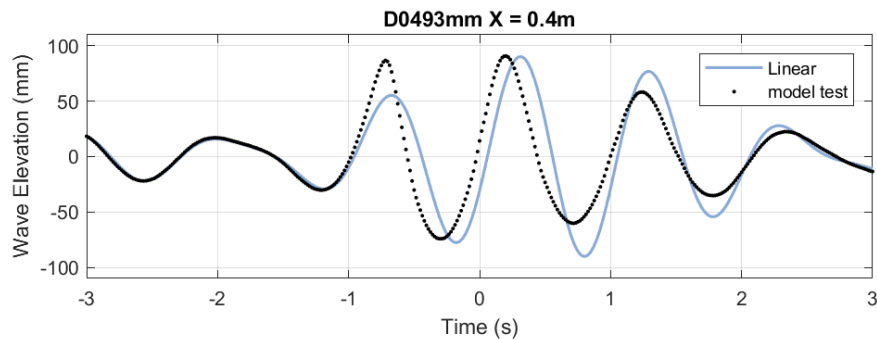
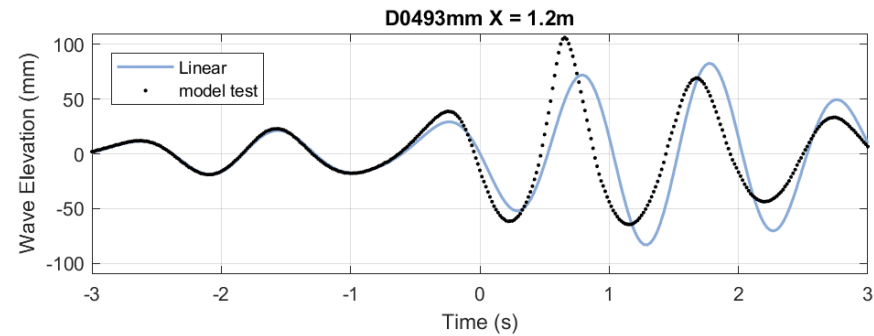
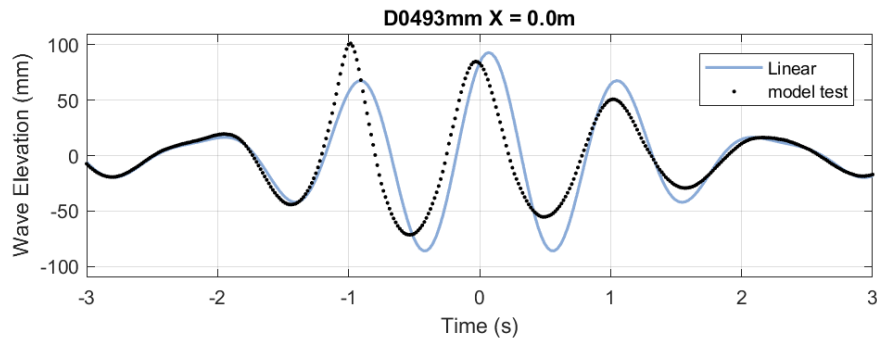
Comparison example

- OMAE 2018-78288 – *Propagation of steep and breaking short-crested waves – A comparison of CFD codes*
 - Comflow and Basilisk
- Example:
 - Spectrum D (narrow banded)
 - Spreading $s=4$
 - Linear amplitude 93mm (at the very limit where breaking was observed)

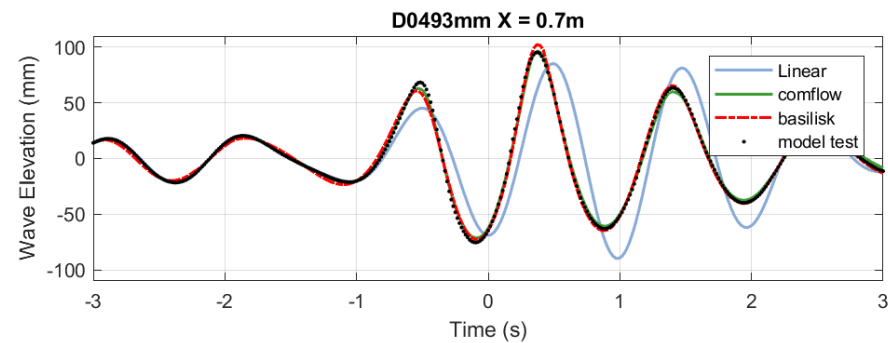
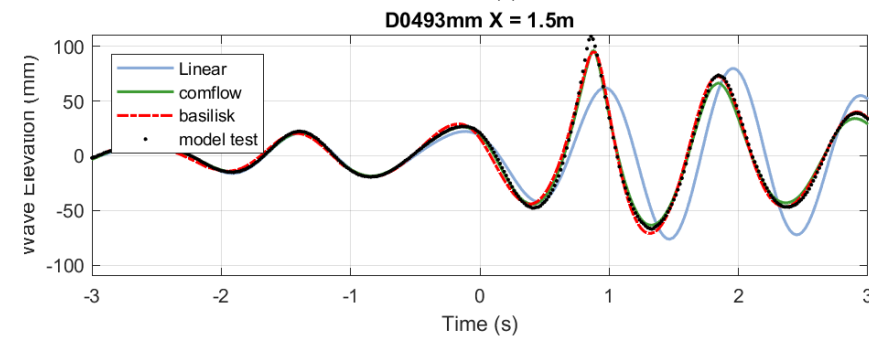
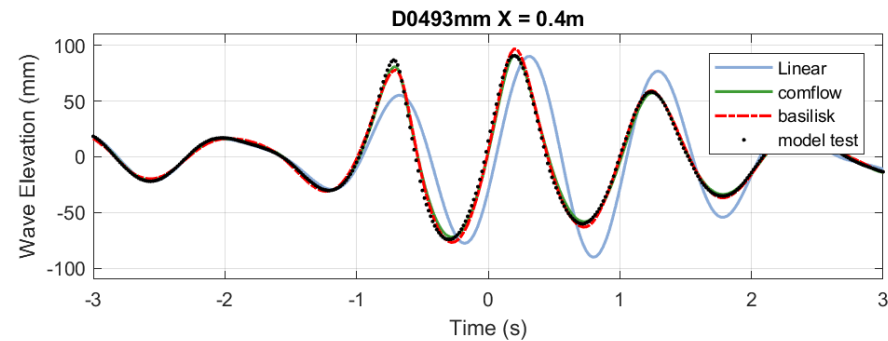
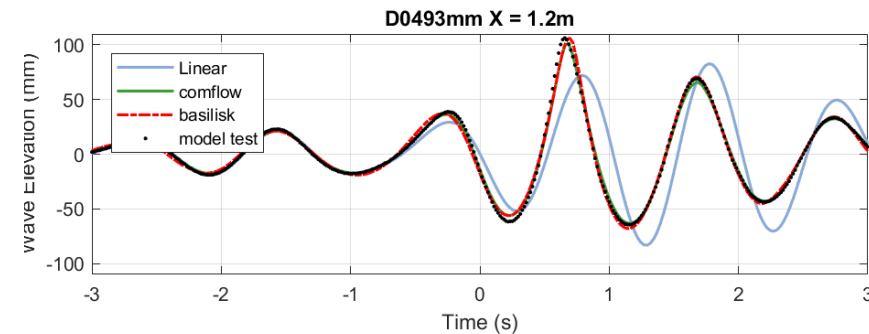
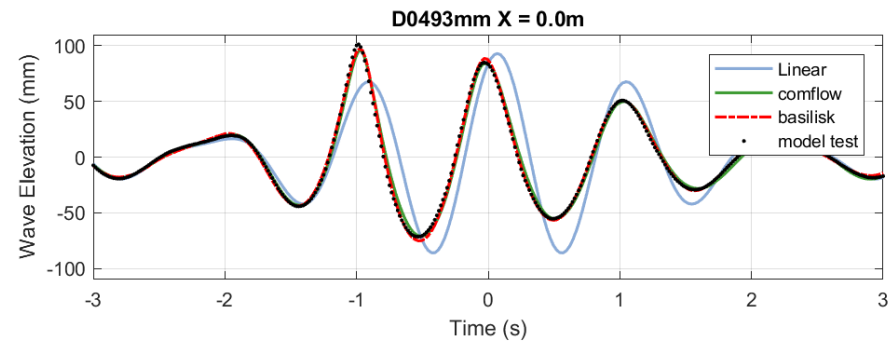


OMAЕ 2018-78288 – *Propagation of steep and breaking short-crested waves – A comparison of CFD codes*

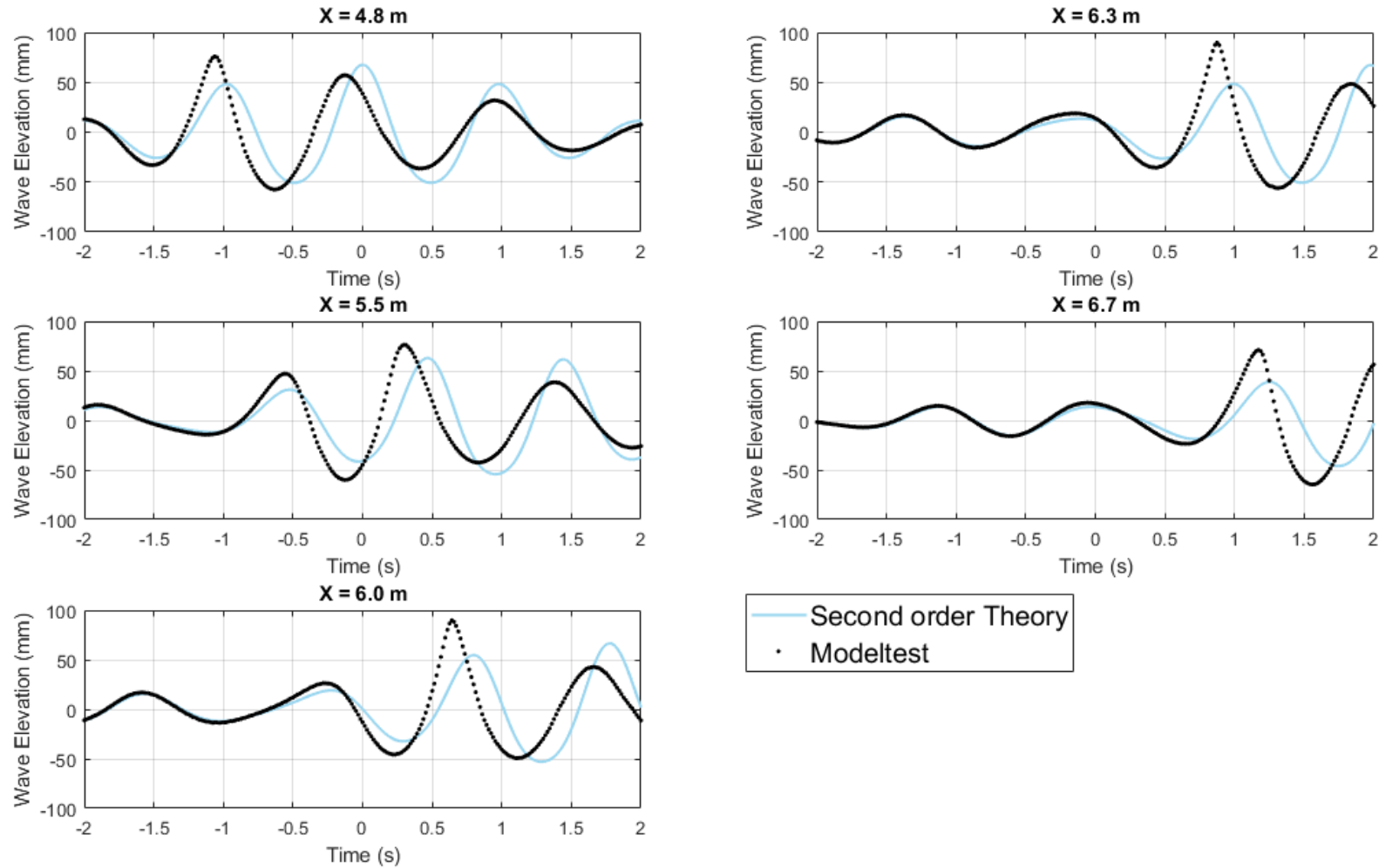
Ex1: Spectrum D, spreading $s=4$, Linear ampl 93m – at the very breaking limit



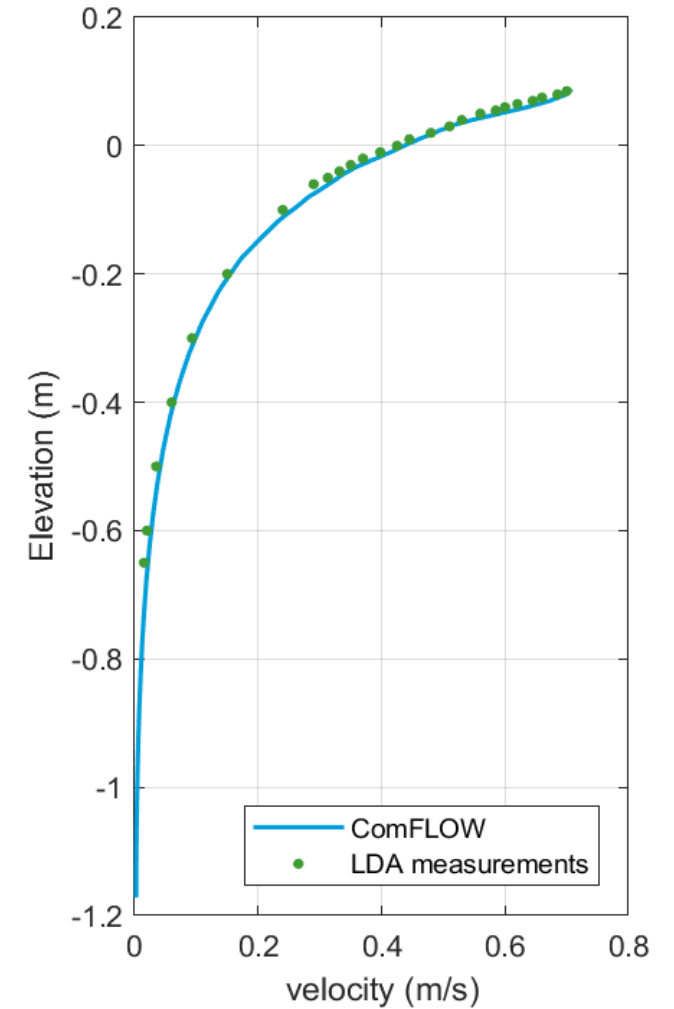
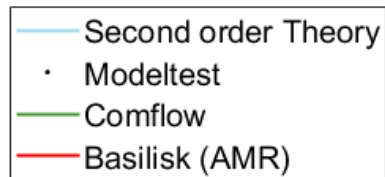
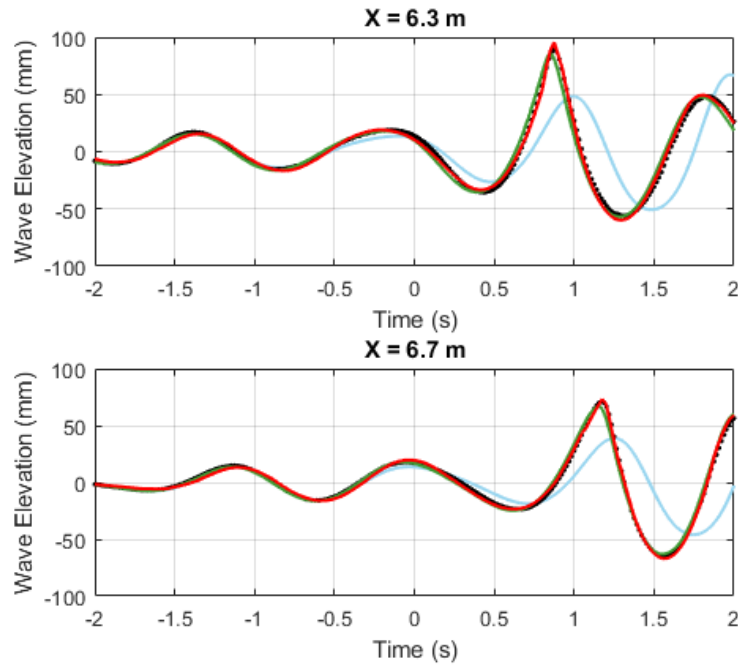
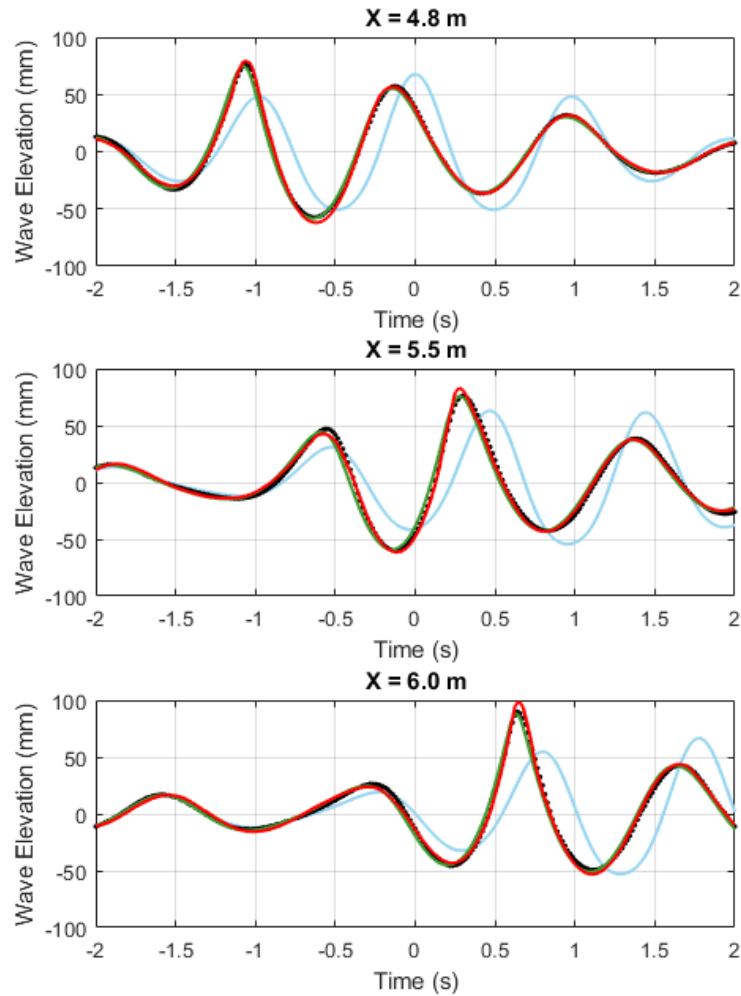
Ex1: Spectrum D, spreading $s=4$, Linear ampl 93m – at the very breaking limit



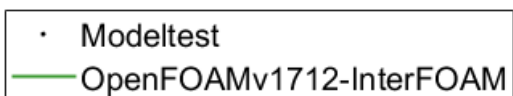
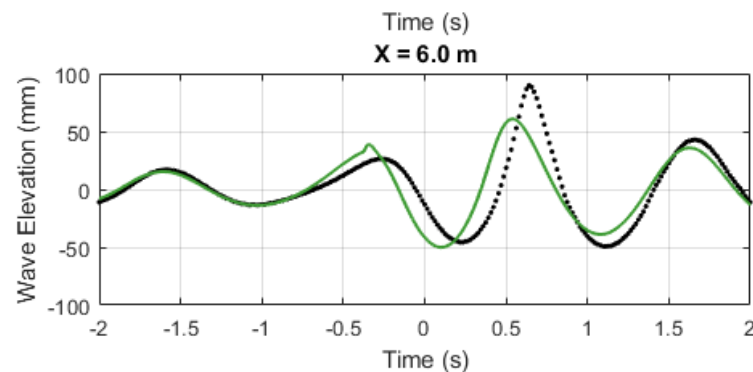
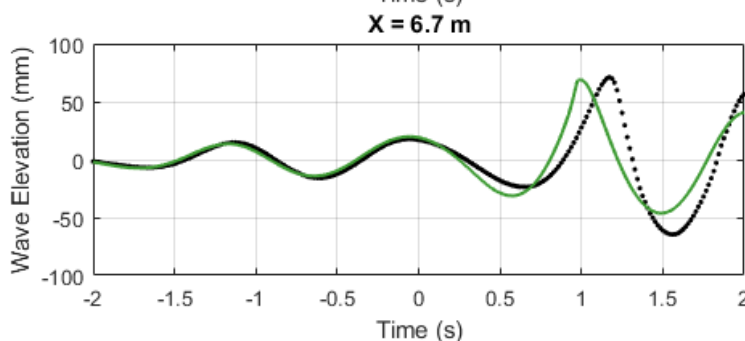
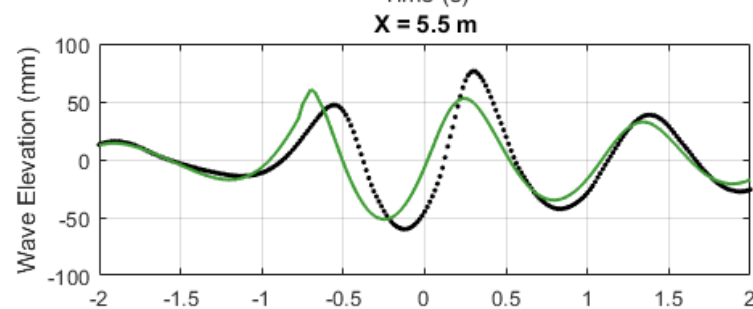
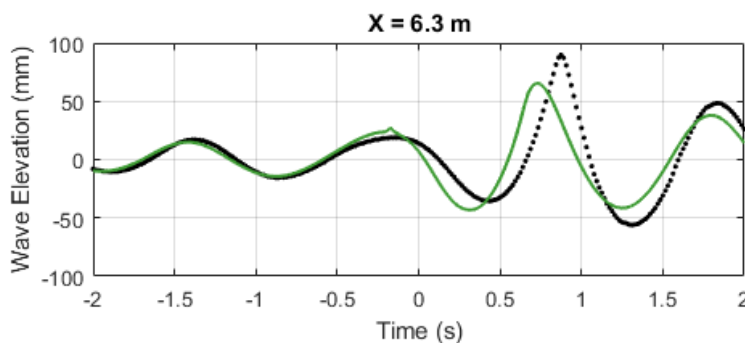
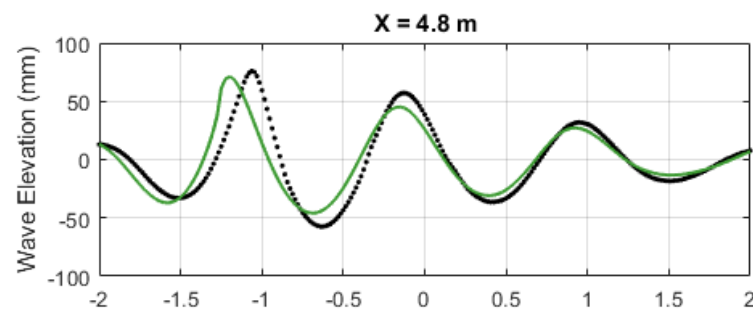
Ex2: Spectrum D, uni-directional, Linear ampl 61mm – at the very breaking limit



Ex2: Spectrum D, uni-directional, Linear ampl 61mm – at the very breaking limit



Example of failure to recreate model test wave:



- Works for lower amplitudes but steep waves break to early
- Large range of schemes and grid size attempted

Comparison conclusion:

- The two codes (ComFLOW & Basilisk) evaluated in the paper seem to be very capable of propagating waves
 - Captures the non-linearities very well
 - Numerical energy dissipation – very little (provided the correct schemes are used)
 - Waves do not break prematurely

Performance

- Comparison to other codes
 - ComFLOW <http://poseidon.housing.rug.nl/sphinx/index.html>
 - Basilisk <http://www.basilisk.fr/>
- The big difference: Octree/AMR
 - Improves accuracy at desired locations
 - Reduced number of cells
 - Reduces calculation time and cost
 - Reduces storage cost
 - Expect runtime to come down with a better chosen AMR criteria

Basilisk:

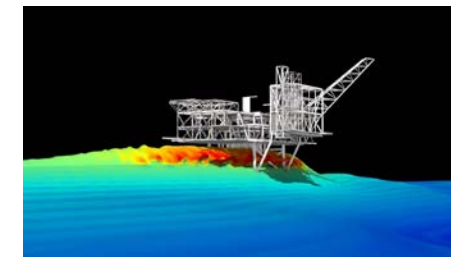
- Two-phase flow, AMR, octree, Level 6/10, mask, maxcellsize: 27.15m, mincellsize: **1.69m**, ~2-3.6 mill cells
- Simulation length: 70 sec
- 16 CPUs, OpenMP
- Runtime : ~**21** hours

ComFLOW:

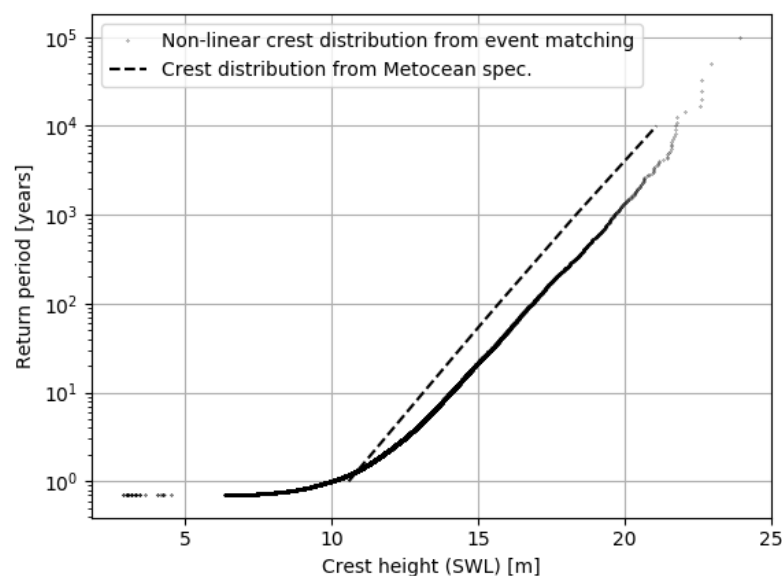
- One-phase flow (water only), Cartesian grid with local refinement, maxcellsize: 8.69m, mincellsize: **2.17m**, ~10 mill cells
- Simulation length: 70 sec
- 16 CPUs, OpenMP
- Runtime : ~**73** hours

Long term statistics of breaking wave properties

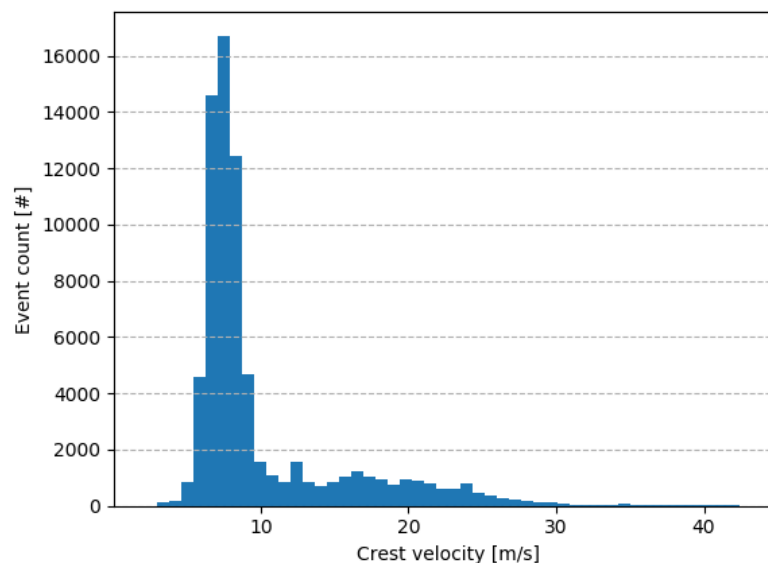
- Capable of running 100's of events -> Statistics
- *OMAE 2018-78283: Long-term analysis by Event Matching*
 - Running a subset of events in CFD (100 or more), and use the stored kinematics to populate the long term distribution



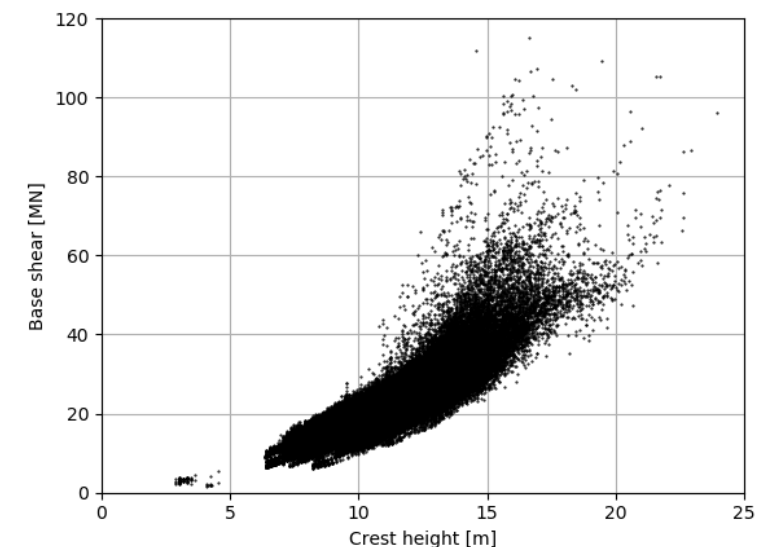
Long-term crest distribution



Distribution of crest velocity

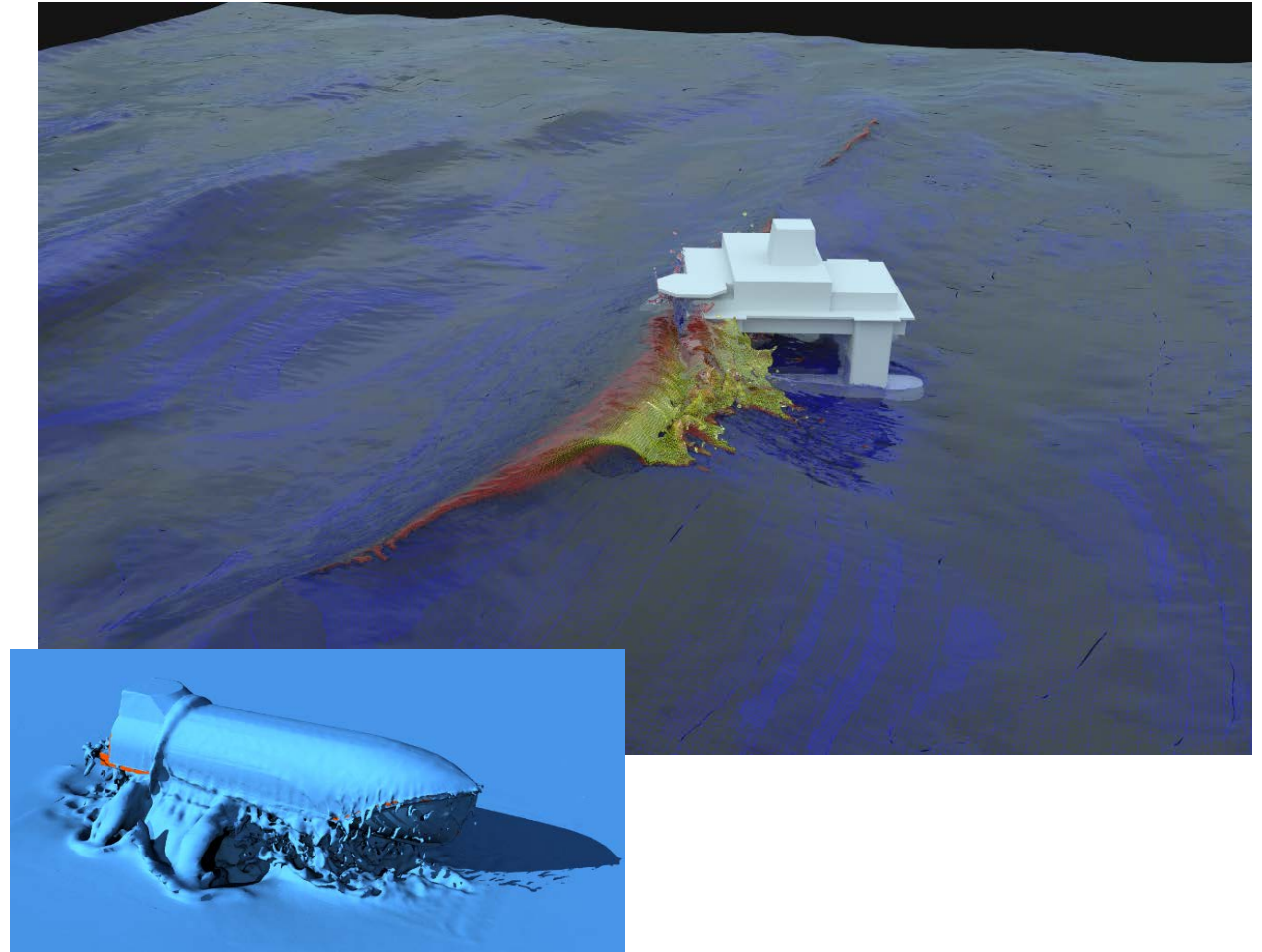


Distribution of wave load (base shear force)



Summary

- Large progress has been made in the modelling and understanding of breaking waves in the ocean thanks to modern CFD codes such as Basilisk
- Thumps up for embedded boundaries!



Questions?

Oystein.Lande@dnvgl.com

www.dnvgl.com

SAFER, SMARTER, GREENER

The trademarks DNV GL®, DNV®, the Horizon Graphic and Det Norske Veritas® are the properties of companies in the Det Norske Veritas group. All rights reserved.